



**EURO-LOCKS**  
LOCKING SYSTEMS FOR INDUSTRY

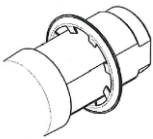


**ELLO** brings a new and fresh feel to the lockers world.  
The new look of latch locks is proudly introduced to the market place.

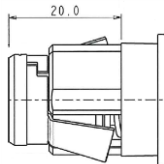
**Main Features:**

- ✦ Free wheel turning system
- ✦ Body and head made in ZAMAK
- ✦ New design giving a fresh impetus to the latch lock world
- ✦ Various fixing hole sizes
- ✦ Suited for padlock loops from 5 to 8mm diameter
- ✦ Three Body Lengths 31,70mm, 20,00mm, 19,50mm

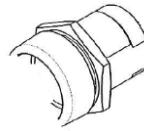
**Four Available fixings**



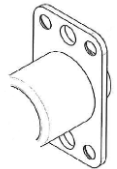
**Quick washer**  
(For 32 & 20mm body length)



**Quick Fixing**  
(Only 20mm body length)  
Panel thickness from 0,8 to 1,6mm



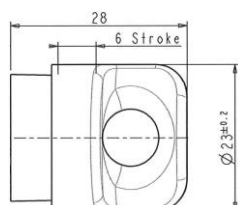
**Nut**  
(For 32 & 20mm body length)



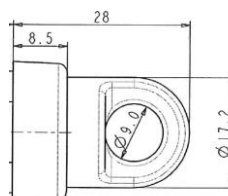
**Screw fixing for wood panels**  
(Only available with 19mm body length and restrained head)

**Two Available Head Shapes**

**Ergonomic Design = ELOH**



**Restrained Design = ELOW**



ELOW	Latch lock with low head	
ELOH	Latch lock with high ergonomic head	
	Body Lengths	
	09	19,5mm – special version with 4 screws fixing – only with ELOW
	20	20MM
	32	31,7MM
	Piercing	
	K	16,6 x diameter 19,1mm
	H	Diameter 17,7 x 20,3mm (only available on snap in fixing version – ELOW/H20)
	J	16,0 x diameter 19,1mm
	Z	Diameter 23mm (only available on special version with 4 screws – ELOW09)
	Shutter	
0	Shutter not available	
	Cam Fixing	
	C6	Cam fitted with a clip (max 2mm cam thickness)
	S6	Cam with star piercing fixed with screw and washer
	S7	Cam with cross piercing fixed with screw and washer
	Key Rotation	
	01	90° Clockwise
	Finish	
	7B	Body and head in Bright Nickel
	2A	Body and head in Bright Chrome
	8H	Body in Bright Nickel and head in Black
	1A	Body in Bright Nickel and head in White powder coating <small>(RAL9010)</small>
	Lock Fixing	
	N	Nut Fixing
	H	Horseshoe clip (please specify panel thickness)
	S	Snap In fixing (please specify panel thickness)
	Z	Fixing with 4 screws (not supplied)
	Master	
	0	No masterkey system



## EXAMPLE

<b>ELOW</b>	<b>32</b>	<b>K</b>	<b>0</b>	<b>LC</b>	<b>01</b>	<b>7B</b>	<b>N</b>	<b>0</b>
-------------	-----------	----------	----------	-----------	-----------	-----------	----------	----------

ELOW Lock – 32mm body length- fixing hole size diameter 19,1 x 16,6mm — Cam fitted with e-clip - 90° Movement Clockwise – nickel finish – Nut fixing - Without Master.

Euro-Locks  
Sicherheitseinrichtungen GmbH  
Am Bruchwald 22  
66280  
Sulzbach/Neuweiler

T: +49 (0) 6897 9072 0  
F: +49 (0) 6897 9072 99  
E: [vertrieb@euro-locks.de](mailto:vertrieb@euro-locks.de)  
W: [www.euro-locks.de](http://www.euro-locks.de)



**L&F** A Lowe & Fletcher Group Company